

## LIST OF LINKS FOR CONNECTIONS PROJECT

Oh no! It's a virus!

Cell Mediated Immunity

---

<http://science.nhmccd.edu/biol/inflam.html>

<http://www.slic2.wsu.edu:82/hurlbert/micro101/images/101PhageLife.gif>

<http://www.slic2.wsu.edu:82/hurlbert/micro101/images/101VirusBudding.gif>

<http://www.slic2.wsu.edu:82/hurlbert/micro101/images/Em10a.gif>

[http://www.nature.com/nrm/journal/v2/n3/animation/nrm0301\\_179a\\_swf\\_MEDIA1.html](http://www.nature.com/nrm/journal/v2/n3/animation/nrm0301_179a_swf_MEDIA1.html)

<http://gslc.genetics.utah.edu/units/basics/transcribe/>

<http://www.cat.cc.md.us/courses/bio141/lecguides/unit3/viruses/ctlapop.html>

<http://www.dukecancervaccines.org/latestflash.htm>

<http://users.rcn.com/jkimball.ma.ultranet/BiologyPages/C/ClassIpath.gif>

[http://www.humphath.com/IMG/jpg/perforin\\_action.jpg](http://www.humphath.com/IMG/jpg/perforin_action.jpg)

Oh no! It's a bacteria!

Humoral Immunity

---

<http://www.accessexcellence.org/AB/GG/antiBInfect.html>

<http://www.cat.cc.md.us/courses/bio141/lecguides/unit2/innate/antibody/phagsum.html>

<http://www.bio.davidson.edu/courses/Immunology/Flash/MHCII.html>

<http://users.rcn.com/jkimball.ma.ultranet/BiologyPages/C/ClassIIpath.gif>

[http://www.cellsalive.com/qtmovs/mac\\_mov.htm](http://www.cellsalive.com/qtmovs/mac_mov.htm)

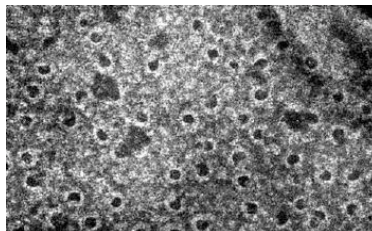
<http://science.nhmccd.edu/biol/inflam.html>

<http://www.people.virginia.edu/~rjh9u/abrsp1.html>

<http://www-biology.ucsd.edu/classes/bimm124/fixation.mov>

<http://www.whfreeman.com/kuby/content/anm/kb06an01.htm>

<http://www.cat.cc.md.us/courses/bio141/lecguides/unit3/intro/t8cell/apcs/apc.html>



# IMMUNOLOGY WEB SITE PROJECT

## PUBLIC DISPLAY OF IMMUNOLOGY CONNECTIONS

Making connections is a way to evaluate the degree to which we understand. Immunology involves both three dimensional structures as well as motion, which are probably best explained through analysis of animations and images. Use the PowerPoint template to produce a “website” which links the basic concept map contents contained therein to the images that best augment them.

*Before you begin, the following computer skills will need to be introduced:*

- Creating a Textbox and sizing a Textbox in PowerPoint
- Creating a Hyperlink to another slide in PowerPoint
- Creating a Hyperlink to a particular website

### **BEGIN FORMING CONNECTIONS**

---

- Go through the PowerPoint template and be comfortable with its structure
- Go through the images in any order you wish and decide with your partner where the image would fit best
- Link the image
- Repeat until you have used EVERY image once

### **FINAL CONNECTIONS**

---

- Link fragments of the **SMART BOARD lecture notes** to the appropriate places in the PowerPoint “Web-Page”
- Link [Immunology Article](#) from class to the appropriate places in the PowerPoint “Web-Page”