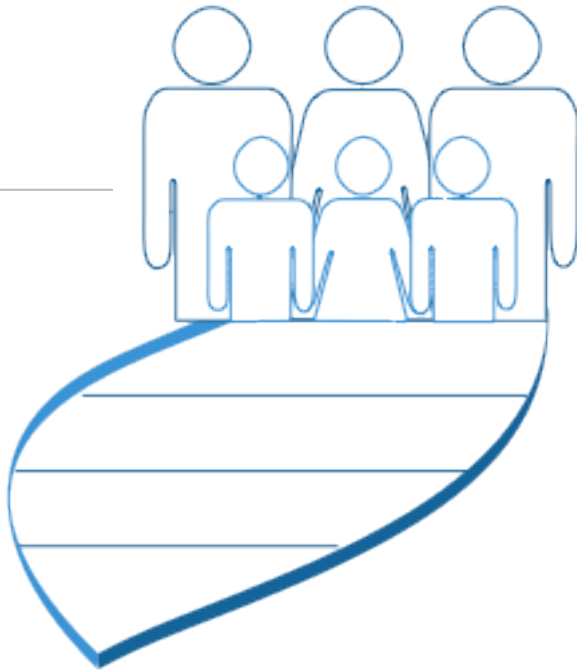


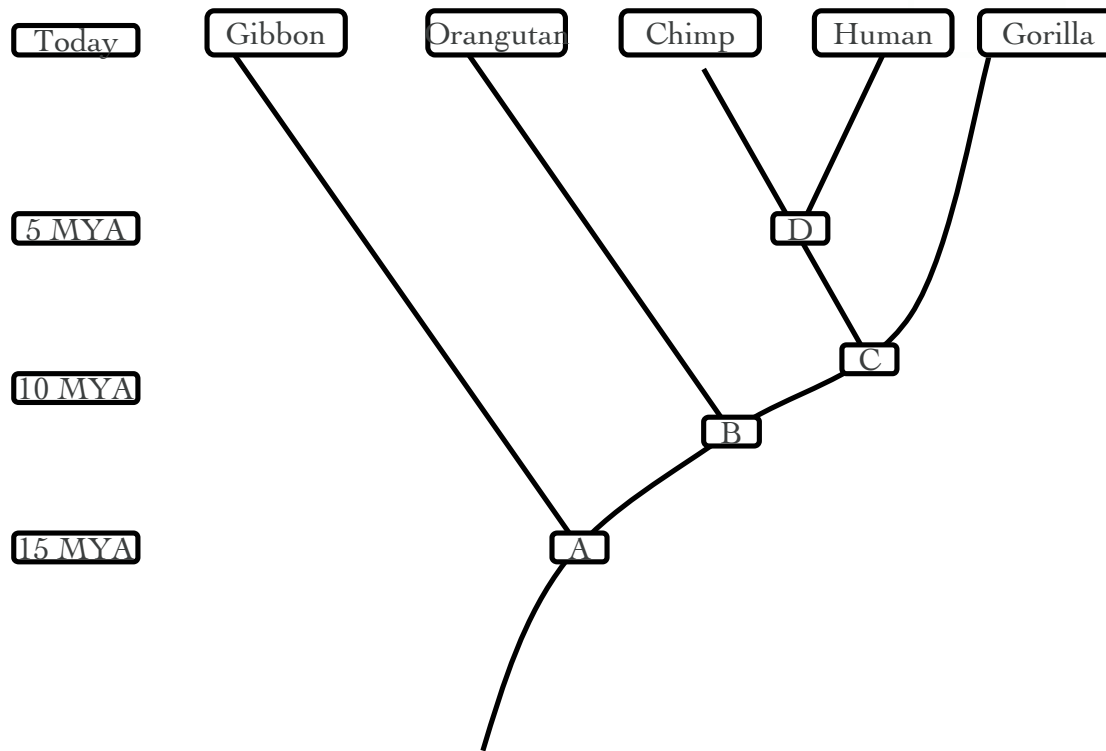


Life Sciences/HHMI  
*OutReach*  
PROGRAM



---

Summer 2006 Workshop  
in Biology and Multimedia  
for High School Teachers



MYA= Millions of years ago

Above image modified from  
[http://www.learner.org/channel/courses/biology/textbook/humev/humev\\_3.html](http://www.learner.org/channel/courses/biology/textbook/humev/humev_3.html)

Based on DNA evidence, scientists have constructed this phylogeny of primates.

1. At which node is the common ancestor of chimps and orangutans?
2. To which primate humans most closely related? How do you know?
3. At which node is the common ancestor of primates? How many years ago did it exist?
4. Is it accurate to say that humans came from chimps? Explain.